

The 580 series ultraslim gastroscop EG-580NW2

New horizons in ultraslim gastroscopy



FUJIFILM

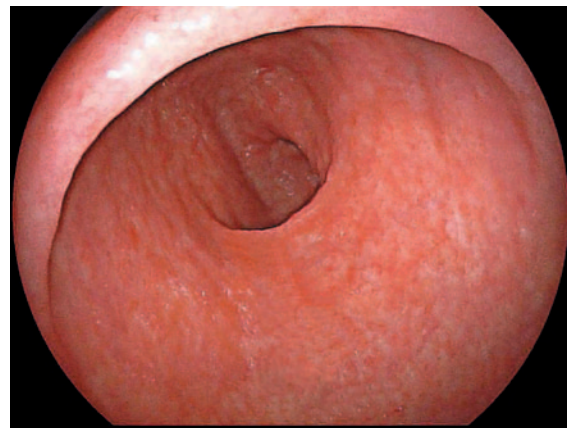
The advanced ultraslim gastroscope EG-580NW2 – superior image quality and excellent maneuverability

► 580 Super CCD

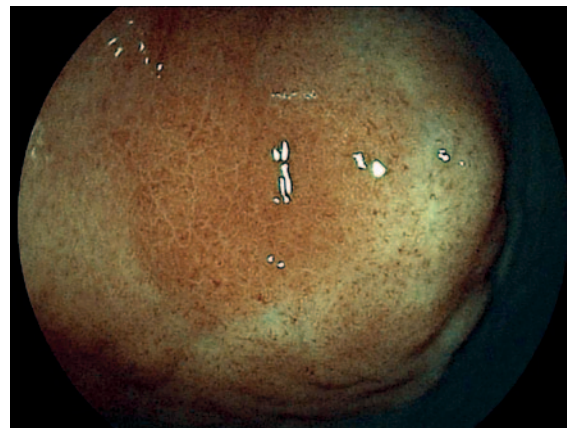


High resolution image quality

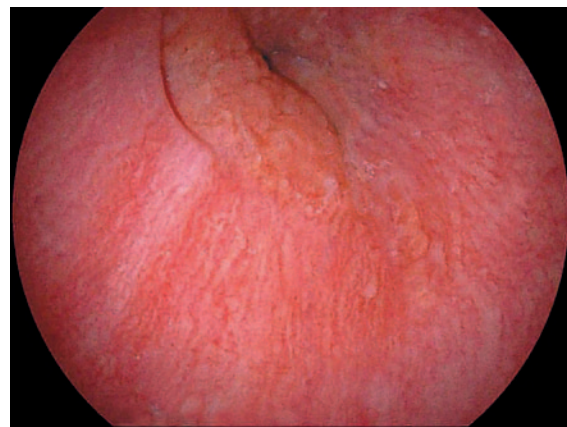
The Super CCD chip technology offers an outstanding high resolution image quality within this ultraslim 5.8 mm gastroscope. The latest FICE technology supports an advanced detection of lesions and tissue.



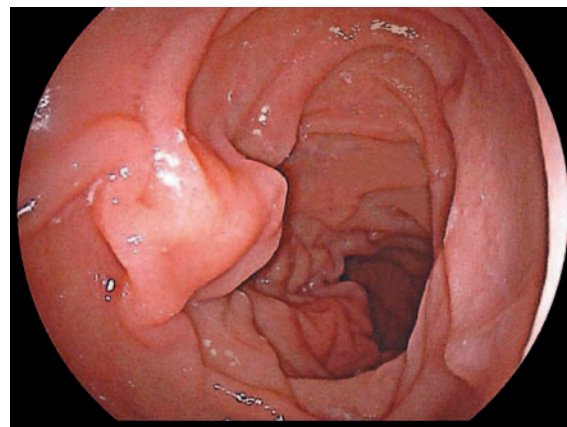
Stomach



Stomach (FICE)



Esophagus

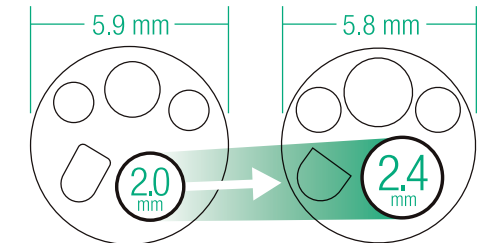


Duodenum

► Enlarged 2.4 mm forceps channel

Improved suction capacity

The forceps channel of 2.4 mm realizes a higher suction ability compared to other ultraslim gastroscopes. Especially when the therapeutic accessory is inserted into the forceps channel.



► Improved lense washing ability

Clear view on inspected area

The newly designed air/water nozzle and ducts enable endoscopists to switch quick between the air and water supply. A perfect solution to keep a clear view on the inspected area by an excellent lense washing ability.

► Advanced maneuverability

For accurate examinations

Thanks to the redesigned forceps channel the passing ability of accessory is smooth and easy within this ultraslim endoscope.



Previous ultraslim gastroscope



EG-580NW2 advanced angulation with inserted accessory

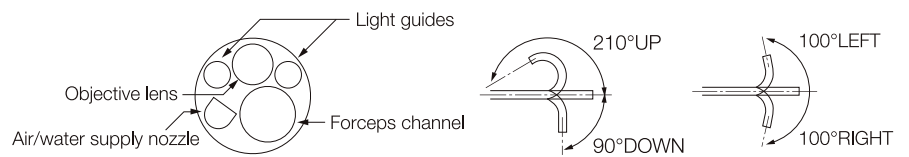
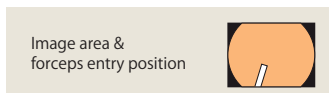


▶ Video Gastroscope



EG-580NW2

Field of view	140°
Observation range	3-100mm
Distal end diameter	5.8 mm
Flexible portion diameter	5.9 mm
Forceps channel diameter	2.4 mm
Bending capacity	UP 210° / DOWN 90° RIGHT 100° / LEFT 100°
Working length	1,100 mm
Total length	1,400 mm
Compatible video processor	VP-4450, VP-4450HD



FUJIFILM

FUJIFILM Europe GmbH

Heesenstr. 31, 40549 Düsseldorf, Germany
 Tel.: +49 211-50 89 0, Fax: +49 211-50 89 8700
 www.fujifilm.eu