

The 600 series CMOS endoscopes
EG-600WR, EC-600WM/WI/WL

New horizons in diagnostic performances



FUJIFILM

The leading-edge high definition endoscopes, equipped with over megapixel CMOS image sensor, realize advanced observation and diagnosis

▶ CMOS Technology

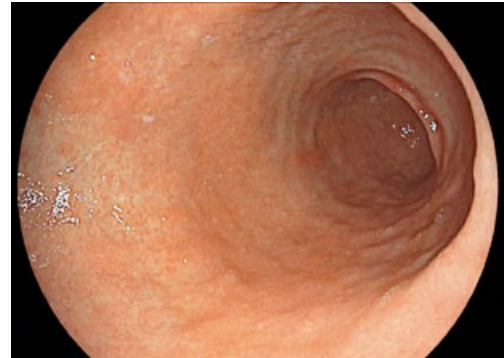


Over megapixel CMOS image sensor producing super-high definition image

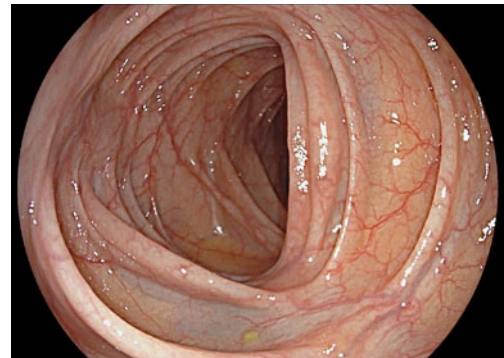
By adapting over megapixel CMOS image sensor, 600 series endoscopes enable super-high definition image to be produced. And the leading-edge CMOS Technology realize less noise and brilliant image. Those features make advanced observation and diagnosis possible.

Megapixel 60P video realize smooth and clear video ability

CMOS Technology realize 60 frame progressive video even though over Megapixel. With the 60 frame progressive scanning method, it is also possible to produce high-definition and less blur still images.



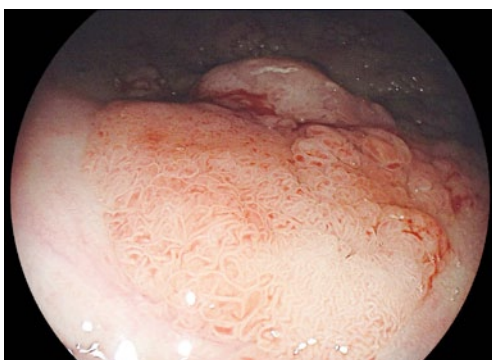
EG-600WR



EC-600WM/WI/WL



EG-600WR



EC-600WM/WI/WL

▶ Close Focus with CMOS Technology



Close Focus with CMOS Technology enhance image diagnosis

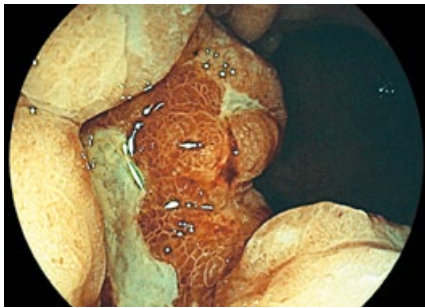
The newly designed high performance optical system enhances close focus observation capability up to 2 mm. The focus at the edges of an image has been improved, minimizing distortion in observation of a lumen. Through a combination with the megapixel CMOS image sensor, high performance optical system assists various observations ranging from close-up to distant views.

► FICE with CMOS Technology

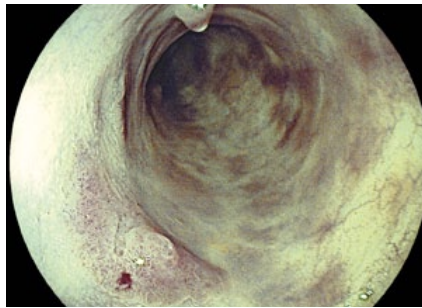


CMOS Technology produces advanced FICE image

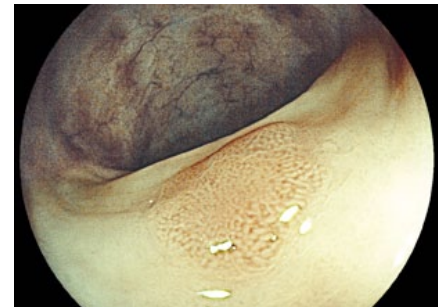
Through higher resolution and improved noise reduction, FICE images are more sharp and clear than ever. It enables easier differentiation between lesion-affected and non-affected tissue.



FICE 1 Stomach

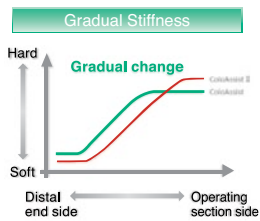


FICE 8 Colon



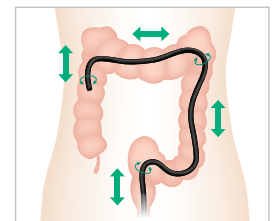
FICE 1 Colon

► ColoAssist II



Newly developed gradual stiffness insertion portion for better insertion into the colon

With the modified insertion tube, the flexibility of the insertion portion gradually increases toward the distal end and allows better insertion operability. Both force and torque transmission have been improved. This feature makes smoother insertion into the colon possible. Its small diameter of 12.0 mm also aims to reduce patient's discomfort.



► Water jet function



The gastroscope and colonoscope both feature the water jet function and helps both better observation and therapeutic procedure.



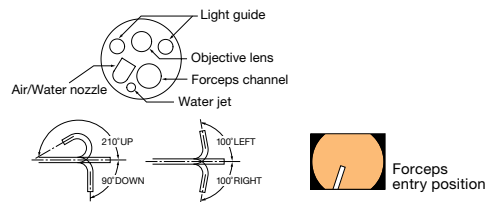
▶ Video Gastroscope



EG-600WR



Field of view	140°
Observation range	2 ~ 100 mm
Bending capacity	UP 210° / DOWN 90° RIGHT 100° / LEFT 100°
Distal end diameter	9.2 mm
Flexible portion diameter	9.3 mm
Forceps channel diameter	2.8 mm
Working length	1,100 mm
Total length	1,400 mm
Water jet	Equipped

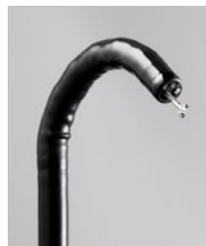


Product name: Video endoscope EG-600WR
GMDN: 38805
Generic name: Flexible video gastroduodenoscope

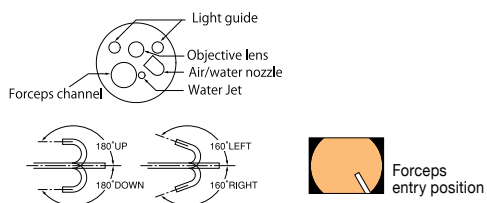
▶ Video Colonoscope



EC-600WM/WI/WL



Field of view	140°
Observation range	2 ~ 100 mm
Bending capacity	UP 180° / DOWN 180° RIGHT 160° / LEFT 160°
Distal end diameter	12.0 mm
Flexible portion diameter	12.0 mm
Forceps channel diameter	3.8 mm
Working length	1,330/1,520/1,690 mm
Total length	1,630/1,820/1,990 mm
Water jet	Equipped



Product name: Video endoscope EC-600WM/EC-600WI/EC-600WL
GMDN: 36117
Generic name: Flexible video colonoscope

FUJIFILM

FUJIFILM Europe GmbH

Heesenstr. 31, 40549 Düsseldorf, Germany
Tel.: +49 211-50 89 0, Fax: +49 211-50 89 8700
www.fujifilm.eu