

**OLYMPUS**<sup>®</sup>

Your Vision, Our Future

**EVIS EXERA III**

EVIS EXERA III GASTROINTESTINAL VIDEOSCOPE

**GIF-1TH190**

Therapeutic endoscope with superb HDTV image quality and a 3.7 mm instrument channel



## Main Features

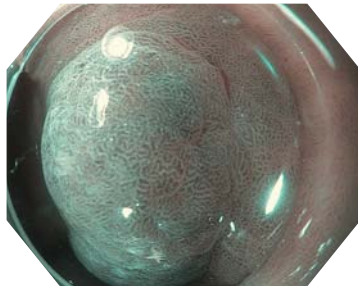
### HDTV Image Quality

HDTV image quality delivers high-definition observation capabilities, even in a new, slimmer scope design.



### NBI (Narrow Band Imaging)

NBI in the GIF-1TH190 provides twice the viewable distance of conventional EVIS EXERA II 180 series scope\*1 and is significantly brighter. HD NBI provides contrast, which may aid in the interpretation of mucosal morphology, vascular patterns, and blood vessel appearance.



### Slim Design and Therapeutic Capability

The 10.0 mm distal end diameter is 0.9 mm smaller than the predecessor\*2 – while still maintaining the flexibility of a 3.7 mm instrument channel diameter.

### Close Focus

The GIF-1TH190 enables close observation of the mucosal surface (2 mm) without the need for electronic magnification.

### Water Jet

A forward water jet helps to keep the mucosa clear during observation and treatment.

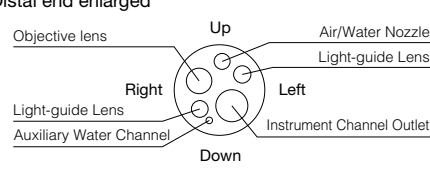


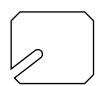
### Waterproof One-touch Connector

A new connector design minimizes the effort required for setup prior to and in between cases. In addition, it is fully submersible and eliminates the need for a water-resistant cap and the associated risk of an expensive repair due to accidental immersion.



## Specifications

Optical System	Field of view	140°	
	Direction of view	Forward viewing	
	Depth of field	2-100 mm	
Insertion Section	Distal end outer diameter	10.0 mm	
	Distal end enlarged		
	Insertion tube outer diameter		10.9 mm
	Working length		1030 mm

Instrument Channel	Channel inner diameter	3.7 mm	
	Minimum visible distance	3.0 mm from the distal end	
Bending Section	Direction from which endotherapy accessories enter and exit the endoscopic image		
			Up 210°
			Down 90°
			Right 100°
Total Length	1350 mm		
	Compatible EVIS EXERA System	Video System Center OLYMPUS CV-190 Xenon Light Source OLYMPUS CLV-190	

\*1 EVIS EXERA II Gastrointestinal Videoscope OLYMPUS GIF TYPE Q180  
 \*2 EVIS EXERA Gastrointestinal Videoscope OLYMPUS GIF TYPE 1TQ160

Image courtesy of Robert H. Hawes, MD and Muhammad Hasan, MD (Florida Hospital Orlando, US)  
 Water Jet image: Image courtesy of Horst Neuhaus, MD (Evangelisches Krankenhaus Düsseldorf, Germany)

Specifications, design and accessories are subject to change without any notice or obligation on the part of the manufacturer.