

EVIS EXERA III Gastrointestinal Videoscope

GIF-H190N

Ultra-slim Design with Impressive HDTV Clarity



Ultra-Slim Design

The ultra-slim 5.4 mm outer diameter of the distal end eases insertion for narrow lumen applications. It is equipped with instrumental channel with a diameter of 2.2 mm for minor therapeutic procedures and biopsies.

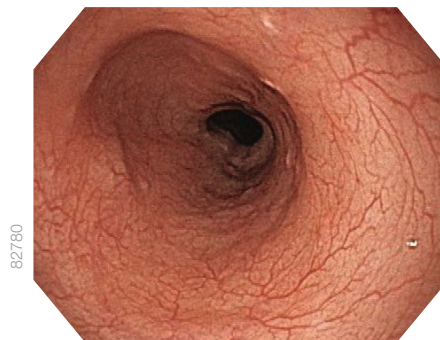
Advanced Image Quality

Even with its ultra slim diameter, the GIF-H190N offers HDTV image quality assisting precise observation thanks to new image sensor and optical system, and also the brighter and better view in mid to long distances by adopting new illumination optics.

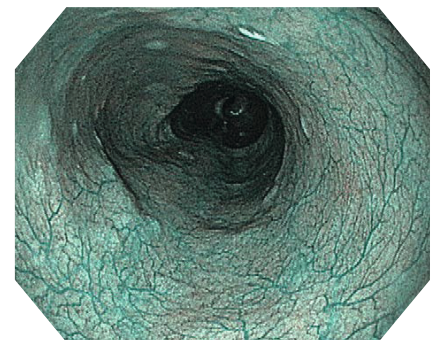
NBI (Narrow Band Imaging)

NBI in EVIS EXERA III provides twice the viewable distance offered by the EVIS EXERA II and offers greater contrast between blood vessels and mucosa.

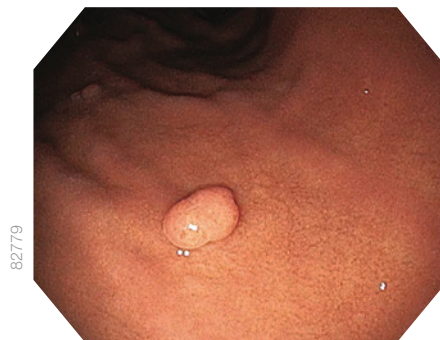
The greatly improved performance of NBI opens up exciting new clinical applications and reinforces NBI's position as the standard of care for GI endoscopy.



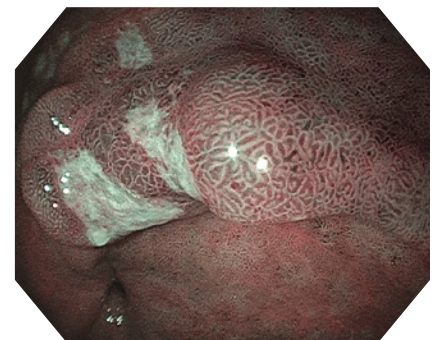
White Light



NBI



White Light



NBI

New Insertion Tube

Designed for painless transoral and transnasal endoscopy, the GIF-H190N features a softer insertion tube while maintaining elasticity and insertion ability into the duodenum. This could assist in reducing patient discomfort when the scope is straightened out in the nasal cavity.

Waterproof One-touch Connector

A new connector design minimizes the effort required for setup prior to and in between cases. In addition, it is fully submersible and eliminates the need for a water-resistant cap and the associated risk of an expensive repair due to accidental immersion.

Specifications						
Optical system	Field of view	140°	Minimum visible distance*1	2 mm		
	Direction of view	Forward viewing	Insertion section	Direction from which EndoTherapy accessories enter and exit the endoscopic image		
	Depth of field	3 – 100 mm		Airflow rate*2	700 mm	20 cm ³ /s
Insertion section	Distal end outer diameter	ø 5.4 mm		Bending section	Angulation range	UP 210° / DOWN 90° / RIGHT 100° / LEFT 100°
	Distal end enlarged			Total length	1420 mm	
	1 Air/water nozzle			Compatible EVIS EXERA SYSTEM	Video System Center OLYMPUS CV-190/CV-190 Plus	
	2 Light guide lens				Xenon Light Source OLYMPUS CLV-190	
	3 Objective lens					
4 Instrument channel outlet						
	Insertion tube outer diameter	ø 5.8 mm				
	Insertion section working length	1100 mm				
	Channel inner diameter	ø 2.2 mm				

*1 Distance from the distal end of the endoscope. *2 Standard when CLV-190 (high air pressure) is used.

EVIS EXERA III GASTROINTESTINALVIDEOSCOPE OLYMPUS GIF-H190N

As medical knowledge is constantly growing, technical modifications or changes of the product design, product specifications, accessories and service offerings may be required.