

Gastrointestinal Videoscope  
**GIF-XZ1200**

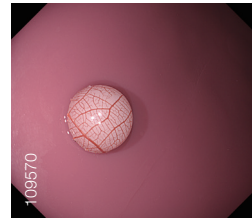
An Innovative Gastroscope with 125x\*1 Optical Magnification



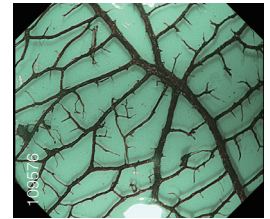
## An Innovative Gastroscope with 125x\*1 Optical Magnification

### Optical 125x Magnification

The GIF-XZ1200 is a state-of-the-art magnifying gastroscope that enables visualization of the finest details of suspicious lesions with up to 125x\*1 magnification. This advanced optical performance is boosted by NBI (Narrow Band Imaging) capability for even more discriminating observation, supporting increased diagnostic accuracy and confidence.



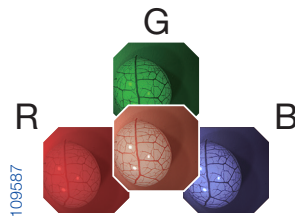
White Light Image



Optical 125x magnification with NBI

### High FPS (Frame Per Second) Mode

The GIF-XZ1200 uses a sequential scanning method to produce endoscopy images. In addition, thanks to the incorporation of a proprietary CMOS chip, the GIF-XZ1200 features a High FPS (Frame Per Second) Mode\*2 that can capture images at 120 frames per second. This helps minimize flickering and color fringing.



### Precise Magnification Control by Zoom Lever

The provided manual zoom lever allows you to manipulate the zoom lever and adjust the magnification ratio with greater precision to obtain a magnified endoscopic image that better suits your needs.



### Distal Hood MAJ-1989

For best results, we recommend use of the Distal Hood MAJ-1989. Especially helpful with magnifying endoscopes, this attachment helps maintain an optimal distance to the mucosa, thereby making it easier to stay in focus.



### Other Features

- ErgoGrip – Improved Control Section
- Compatible with TXI, RDI, NBI when connected to the CV-1500
- Waterproof One-Touch Connector

\*1 With OEV321UH 4K UHD LCD MONITOR. \*2 Only available when connected to CV-1500.

Specifications		
<b>Optical System</b>	Field of view	Wide: 140° Tele : 87°
	Direction of view	Forward viewing
	Depth of field	Normal : 7 - 100 mm Tele : 1.5 - 3 mm
<b>Insertion Section</b>	Distal end outer diameter	ø 9.9 mm
	Distal end enlarged	
	Insertion tube outer diameter	ø 9.9 mm
	Working length	1030 mm
<b>Instrument Channel</b>	Channel inner diameter	ø 2.8 mm
	Minimum visible distance*3	2 mm (Normal focus mode)
	Direction from which EndoTherapy accessories enter and exit the endoscopic image	
<b>Auxiliary Water Channel</b>	Direction from which water jet appears in the endoscopic image	
<b>Bending Section</b>	Angulation range	Up 210° / Down 90° / Right 100° / Left 100°
<b>Total Length</b>		1350 mm
<b>Compatible System</b>		Video System Center CV-1500
		Video System Center CV-290
		Light Source CLV-290SL, CLV-290

\*3 Distance from the distal end of the endoscope.



EVIS X1 GASTROINTESTINAL VIDEOSCOPE GIF-XZ1200

As medical knowledge is constantly growing, technical modifications or changes of the product design, product specifications, accessories and service offerings may be required.