

**OLYMPUS**<sup>®</sup>

Your Vision, Our Future

**EVIS LUCERA  
ELITE**

EVIS LUCERA ELITE COLONOVIDEOSCOPE

**CF-HQ290ZL/I**

HQ image quality emphasizes the performance of optical magnification





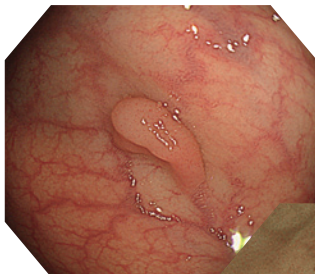
## Main Features

### HQ Image Quality

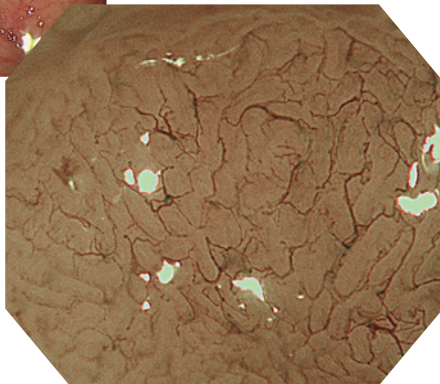
With its advanced OLYMPUS optics, the CF-HQ290ZL/I produces clear and high-resolution HQ images. In addition, the performance of the scope connected to the EVIS LUCERA ELITE system achieves noise reduction of the endoscopic image.

### Optical 80x Magnification

This scope magnifies images by 80x\*, with its HQ image quality attaining close views of the mucosal surface clearly. Combined with the brighter NBI (Narrow Band Imaging), mucosal tissue and capillary networks are enhanced, to further support detailed observation. \*When using HIGH DEFINITION LCD MONITOR OEV262H



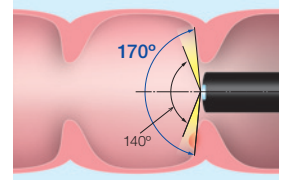
White Light



Optical 80x magnification with NBI

### Wide Viewing Angle

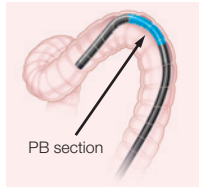
A 170° wide-angle field of view is now achieved. This can help physicians to detect mucosal changes more rapidly with less need for angulation.



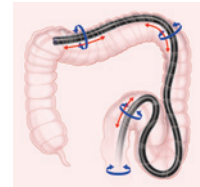
### RIT (Responsive Insertion Technology)

RIT combines three proprietary insertion tube technologies: PB (Passive Bending), HFT (High Force Transmission) and variable stiffness. These technologies are designed to facilitate complete colonoscopies by improving scope handling, insertability and ergonomics.

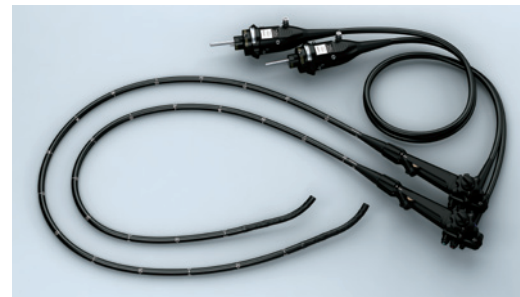
**PB** helps EVIS LUCERA ELITE 290 Series scopes move through acute bends in the colon.



**HFT** provides improved operator control for pushing, pulling and twisting maneuvers.



**Variable stiffness** allows the physician to adjust the rigidity of OLYMPUS scopes as needed, by simply turning an adjustment ring on the scope control section.



## Specifications

Optical System	Field of view	Wide: 170°/Tele: 90°
	Direction of view	Forward viewing
	Depth of field	Wide: 7 to 100 mm/ Tele: 2 to 3 mm
Insertion Section	Distal end outer diameter	13.2 mm
	Distal end enlarged	
	Insertion tube outer diameter	12.8 mm
Working length		L: 1680 mm I: 1330 mm

Instrument Channel	Channel inner diameter	3.7 mm
	Minimum visible distance	3.0 mm from the distal end
Water Jet Channel	Direction from which endotherapy accessories enter and exit the endoscopic image	
	Direction from which the water jet enter in the endoscopic image	
Bending Section	Angulation range	Up 180°/Down 180°/ Right 160°/Left 160°
Total Length	L: 2005 mm I: 1655 mm	
Compatible EVIS LUCERA System	EVIS LUCERA ELITE VIDEO SYSTEM CENTER OLYMPUS CV-290 EVIS LUCERA ELITE XENON LIGHT SOURCE OLYMPUS CLV-290SL, CLV-290	

Specifications, design and accessories are subject to change without any notice or obligation on the part of the manufacturer.