

Colonovideoscope

CF-HQ1100DL/I

Delivering Excellence in Routine Colonoscopy

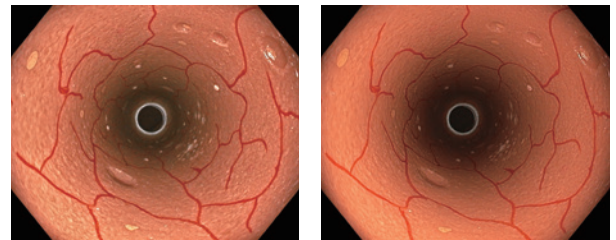




Delivering Excellence in Routine Colonoscopy

Optical Diagnosis Empowered by Dual Focus and NBI

Dual Focus, a unique OLYMPUS optical innovation, allows the user to select the desired depth for observation and provides magnified images when in near focus mode with the simple push of a scope switch. It supports high-confidence optical assessment of lesions in combination with well-established NBI (Narrow Band Imaging) observation.

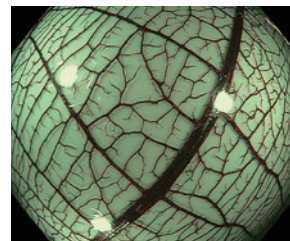


TXI

White Light

Improved Image Quality and Innovative Observation Mode with CV-1500

When CF-HQ1100DL/I is combined with the CV-1500 Video Processor, the processor's 5-LED light source offers innovative observation modes, —TXI (Texture and Color Enhancement Imaging), RDI (Red Dichromatic Imaging) and NBI (Narrow Band Imaging)— while its noise reduction system enables clear observation with less noise.



NBI Near Focus

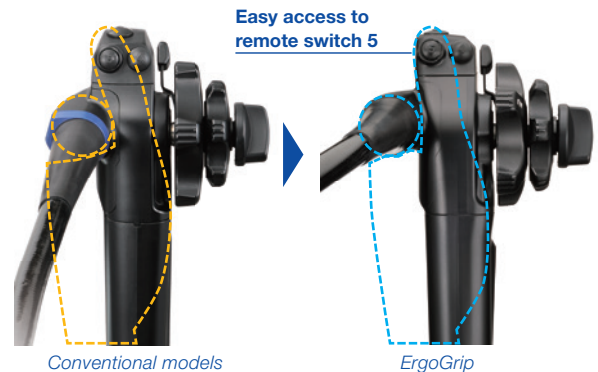
Easy access to remote switch 2



Easy access to angulation control knobs

ErgoGrip

The ergonomically designed handle provides a comfortable and stable grip, lighter weight, and greater ease in reaching the angulation control knobs and scope switches.



Other Features

- RIT (Responsive Insertion Technology)
- ScopeGuide-ready · 170° Wide viewing angle
- WaterJet · Waterproof one-touch connector

Specifications					
Optical System	Field of view	Normal focus mode: 170° Near focus mode: 160°	Bending Section	Angulation range	Up 180° / Down 180° / Right 160° / Left 160°
	Direction of view	Forward viewing		Total Length	L: 2005 mm I: 1655 mm
	Depth of field	Normal focus mode: 5 - 100 mm Near focus mode: 2 - 6 mm			Compatible System
Insertion Section	Distal end outer diameter	ø 13.2 mm	*1 Distance from the distal end of the endoscope.		
	Distal end enlarged				
	Insertion tube outer diameter	ø 12.8 mm			
	Working length	L: 1680 mm I: 1330 mm			
	Channel inner diameter	ø 3.7 mm			
Instrument Channel	Minimum visible distance*1	4 mm (Normal focus mode)			
	Direction from which EndoTherapy accessories enter and exit the endoscopic image				
Auxiliary Water Channel	Direction from which water jet appears in the endoscopic image				

Specifications, design, and accessories are subject to change without any notice or obligation on the part of the manufacturer.