

**OLYMPUS**<sup>®</sup>

Your Vision, Our Future

**EVIS LUCERA  
ELITE**

EVIS LUCERA ELITE COLONOVIDEOSCOPE

**PCF-H290ZL/I**

High-definition optical magnification combined with enhanced maneuverability

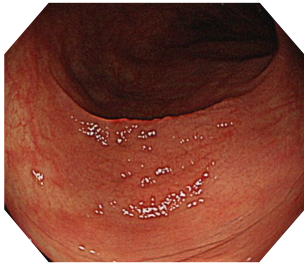




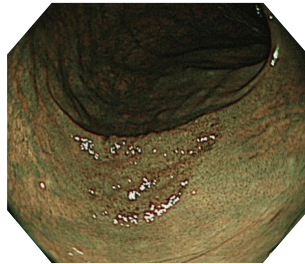
## Main Features

### HDTV and NBI (Narrow Band Imaging)

With its HDTV image quality, the PCF-H290ZL/I enables clear views of the mucosal surface. Combined with the brighter NBI, mucosal tissue and capillary networks are enhanced, to further support detailed observation.



White Light

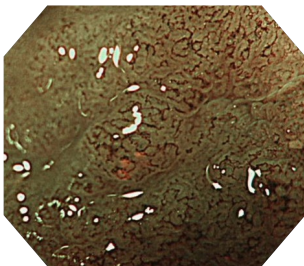


NBI

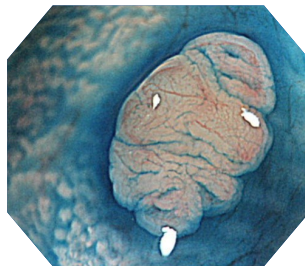
### High Optical Magnification in a Slim Diameter

While maintaining a slim outer diameter, the PCF-H290ZL/I provides 110x\* optical magnification. The high optical magnification may contribute to the detection/diagnosis of the lesions.

\*When using HIGH DEFINITION LCD MONITOR OEV262ZH



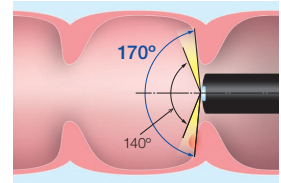
Optical zoom + NBI



Optical zoom + Dye spray

### Wide Viewing Angle

A 170° wide-angle field of view is now achieved. This can help physicians to detect mucosal changes more rapidly with less need for angulation.



### RIT (Responsive Insertion Technology)

RIT combines three proprietary insertion tube technologies in EVIS LUCERA ELITE 290 Series scopes. These technologies are designed to facilitate complete colonoscopies by improving scope handling, insertability and ergonomics.

### Waterproof One-touch Connector

The new connector design minimizes the effort required for setup prior to and in between cases. In addition, it is fully submersible and eliminates the need for a water-resistant cap and the associated risk of an expensive repair due to accidental immersion.



## Specifications

Optical System	Field of view	Wide: 170°/Tele: 85°
	Direction of view	Forward viewing
	Depth of field	Wide: 7 to 100 mm/ Tele: 1 to 2 mm
Insertion Section	Distal end outer diameter	11.7 mm
	Distal end enlarged	
	Insertion tube outer diameter	11.8 mm
	Working length	L: 1680 mm I: 1330 mm

Instrument Channel	Channel inner diameter	3.2 mm
	Minimum visible distance	3.0 mm from the distal end
Water Jet Channel	Direction from which endotherapy accessories enter and exit the endoscopic image	
	Direction from which the water jet enter in the endoscopic image	
Bending Section	Angulation range	Up 180°/Down 180°/ Right 160°/Left 160°
Total Length	L: 2005 mm I: 1655 mm	
Compatible EVIS LUCERA System	EVIS LUCERA ELITE VIDEO SYSTEM CENTER OLYMPUS CV-290 EVIS LUCERA ELITE XENON LIGHT SOURCE OLYMPUS CLV-290SL, CLV-290	

Specifications, design and accessories are subject to change without any notice or obligation on the part of the manufacturer.