

# OLYMPUS

Your Vision, Our Future

## EVIS EXERA III

### PCF-PH190L/I

An innovative series of ultra-slim colonoscopes featuring HDTV image quality.



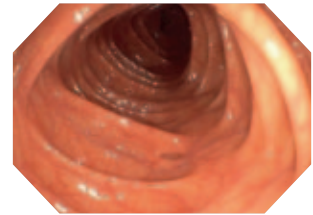
## Main features

### New ultra-slim colonoscope design

With an ultra-slim scope diameter of only 9.7 mm, the PCF-PH features our new RIT colonoscope technology which combines effective PB (Passive Bending) and HFT (High Force Transmission). PB helps EVIS EXERA III 190 series scopes move through acute bends in the colon. HFT provides improved operator control for both pushing and twisting manoeuvres. The slim diameter and these superb functions will help insertion go even more smoothly, for quicker procedures with less discomfort.

### HDTV image quality

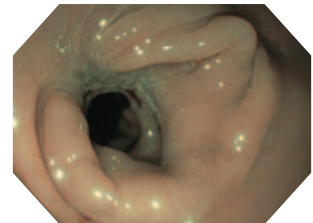
Even with its ultra-slim diameter, the PCF-PH190 offers HDTV image quality that greatly assists close mucosal observation.



HDTV  
Image courtesy of Horst Neuhaus, MD

### NBI (Narrow Band Imaging)

NBI in EVIS EXERA III 190 series scopes provides twice the viewable distance of EVIS EXERA II 180 series scopes and offers much greater contrast between blood vessels and mucosa. The greatly improved performance of NBI opens up exciting new clinical applications and reinforces NBI's position as the standard of care for GI endoscopy.



NBI  
Image courtesy of Roy Soetikno, MD

### Waterproof One-touch Connector

A new connector design minimises the effort required for set-up prior to and in between cases. In addition, it is fully submersible and eliminates the need for a water-resistant cap and the associated risk of an expensive repair due to accidental immersion.



## Specifications

<b>Optical system</b>	Field of view	140°
	Direction of view	Forward viewing
	Depth of field	2–100 mm
<b>Insertion section</b>	Distal end outer diameter	9.7 mm
	Distal end enlarged	
	Insertion tube outer diameter	9.5 mm
	Working length	L: 1680 mm, I: 1330 mm
<b>Instrument channel</b>	Channel inner diameter	3.2 mm
	Minimum visible distance	3.0 mm from distal end
	Direction from which endotherapy accessories enter and exit the endoscopic image	



<b>Bending section</b>	Angulation range	Up 180°
		Down 180°
		Right 160°
		Left 160°
<b>Total length</b>	L: 2000 mm I: 1650 mm	
<b>Compatible EVIS EXERA system</b>	Video system center OLYMPUS CV-190	Xenon light source OLYMPUS CLV-190

Specifications, design and accessories are subject to change without any notice or obligation on the part of the manufacturer.