

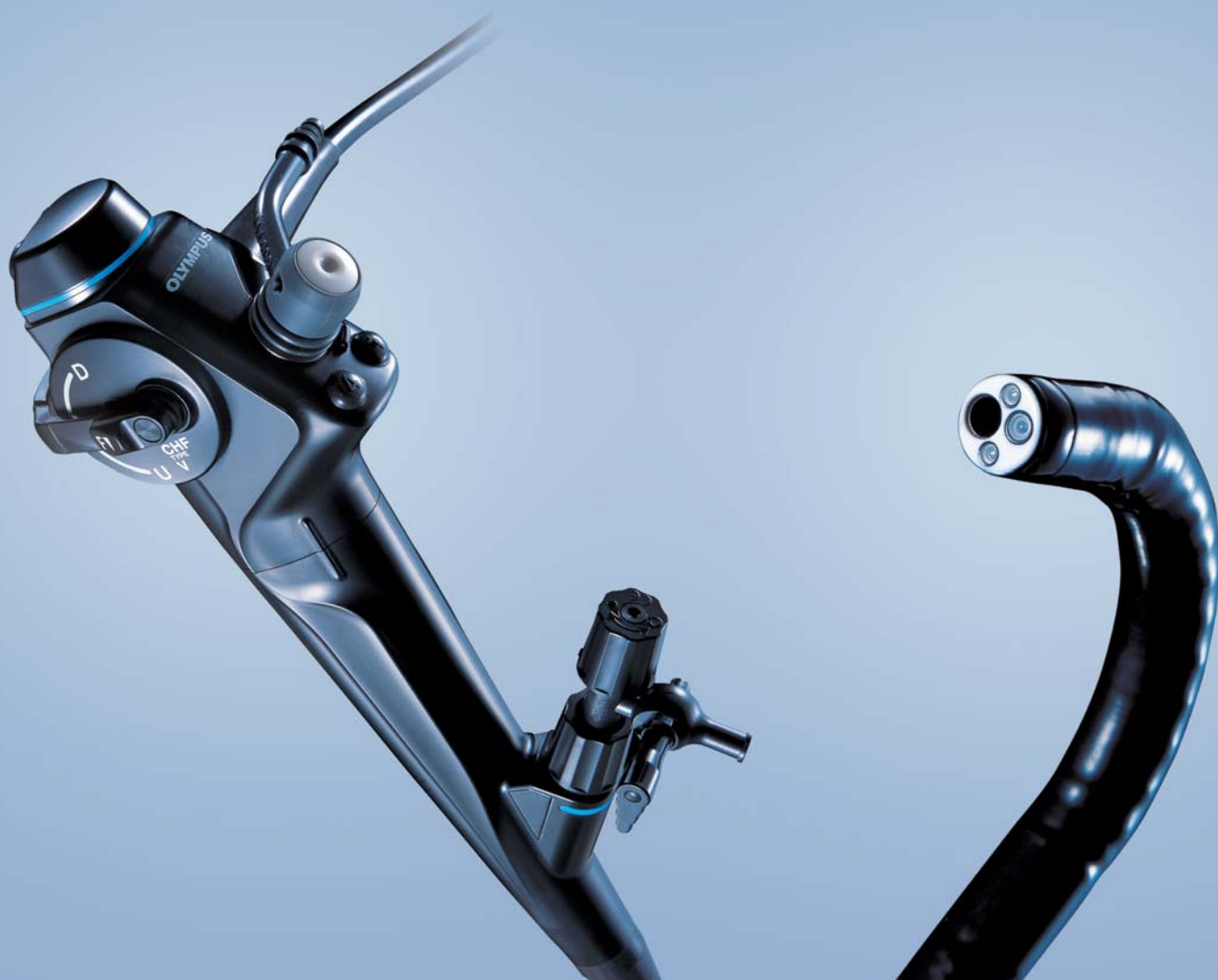
OLYMPUS[®]

Your Vision, Our Future

CHOLEDOCHO-VIDEOSCOPE

CHF-V

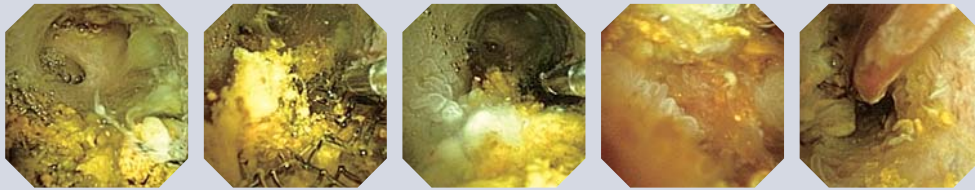
Visualize Precision — Olympus Brings It Closer



Brilliant Imaging Performance Brings A New Perspective To Endoscopy

CCD-on-the-tip for brilliantly visualized images

- A simultaneous-multicolor type CCD that features color consistent moiré-free imaging is introduced to the visualization of the bile duct.
- With its deep depth of field of view, this system eliminates the need for inconvenient intra-operative focusing.
- The CHF-V's image is even larger and less distorted than that of our conventional fiberscope*, making the most of its high-resolution image quality and enhancing observation.



*The OES choledochofiberscope CHF-P60.



Specifications

Optical System	Field of View	120°
	Direction of View	Forward viewing
	Depth of Field	3 - 50 mm
Distal End	Outer Diameter	4.9 mm
	Bending Section	Angulation Range Up 160° / Down 130°
Insertion Tube	Outer Diameter	5.2 mm
	Length	Working Length
		Total Length
Biopsy Forceps	Minimum Visible Distance	3 mm from distal end
Instrument Channel	Inner Diameter	2.0 mm

Standard Set

• Choledcho-Videoscope CHF TYPE V	1
• MAJ-891 Forceps/Irrigation Plug	1
• MB-156 ETO cap	1
• MAJ-1077 Suction Cleaning Adapter	1
• MAJ-579 Biopsy Valve 10 pcs	1
• MH-507 Channel-Opening Cleaning Brush	1
• BW-15B Channel Cleaning Brush	1
• FB-19SX-1 Biopsy Forceps Fenestrated	2
• FG-24SX-1 Grasping Forceps Basket Type	2
• PW-7SX-1 Washing Pipe Retro-Jet	2
• MAJ-207 Suction Valve 10 pcs	1

Compatible Video Systems



EVIS EXERA II Universal Platform



VISERA Pro Video System



VISERA Video System

• Some of these products may not be available in some areas. For further information, contact Olympus.

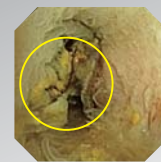
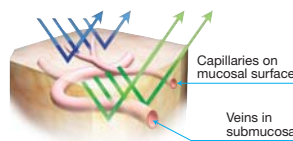
Accessories

BIOPSY FORCEPS			ROTATABLE BIOPSY FORCEPS	GRASPING FORCEPS		WASHING PIPE	
Fenestrated FB-19SX-1	Fenestrated with needle FB-34C-1	Fenestrated FB-21SX-1	Fenestrated FB-19CR-1	Rubber tips (non-latex) FG-20P-1	Fenestrated FG-24SX-1	Sharp tooth FG-53SX-1	Back flushing PW-7SX-1

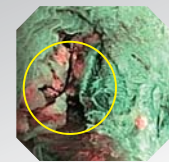


Narrow Band Imaging for a more discerning view

Available in combination with Evis Exera II (CV-180 + CLV-180) or Visera Pro (OTV-S7VPro + CLV-S40Pro).



Conventional image



NBI image

Specifications, design and accessories are subject to change without any notice or obligation on the part of the manufacturer.



OLYMPUS MEDICAL SYSTEMS CORP.
Shinjuku Monolith, 2-3-1 Nishi-Shinjuku, Shinjuku-ku, Tokyo 163-0914, Japan

For a complete listing of sales and distribution locations visit www.olympus.com