

ENDOSCOPIC ULTRASONIC PROBES

A Wide Range of Ultrasonic Probes Enhance EBUS Versatility

OLYMPUS provides a wider range of ultrasound probes to allow endobronchial ultrasonography of target lesions in the central and peripheral airways.

- Central Region (Balloon Contact Method)**
UM-BS20-26R+MAJ-643R (2.8 mm or greater channel diameter)
- Peripheral Region (Direct Contact Method)**
UM-S30-25R (2.8 mm or greater channel diameter)
UM-2R/3R (2.8 mm or greater channel diameter)
UM-S30-20R (2.2 mm or greater channel diameter) **Guide sheath compatible**
UM-S20-20R (2.2 mm or greater channel diameter) **Guide sheath compatible**
UM-S20-17S (2.0 mm or greater channel diameter) **Guide sheath compatible**

Central Region

UM-BS20-26R

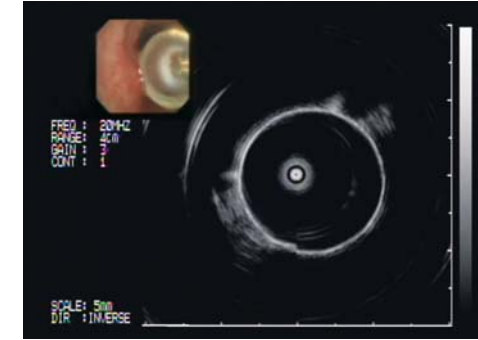
Peripheral Region

UM-S20-20R

UM-S20-17S plus Guide Sheath Kit

Balloon Contact Method

UM-BS20-26R



UM-BS20-26R Main Features

- Compatible with bronchoscopes with a channel diameter of 2.8 mm or greater.
- The Balloon Contact Method can be used when this probe is combined with the MAJ-643R dedicated balloon sheath. Once this combination has been passed through the scope channel, the balloon can be inflated at the tip of the probe.
- All you have to do to perform ultrasonography is connect the probe to a radial type endoscopic ultrasound center.

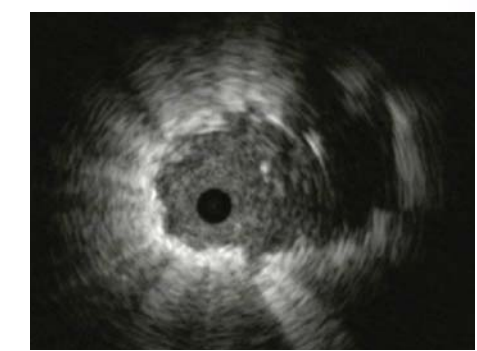
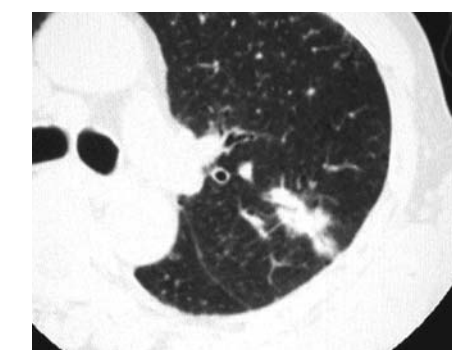
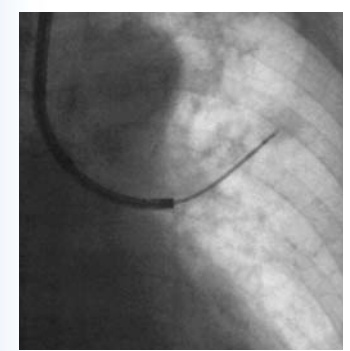


Caution: The Balloon contains natural rubber latex which may cause allergic reactions.
Note: The three-way stopcock, syringe, and extension tube are required when the balloon sheath is used.

Direct Contact Method

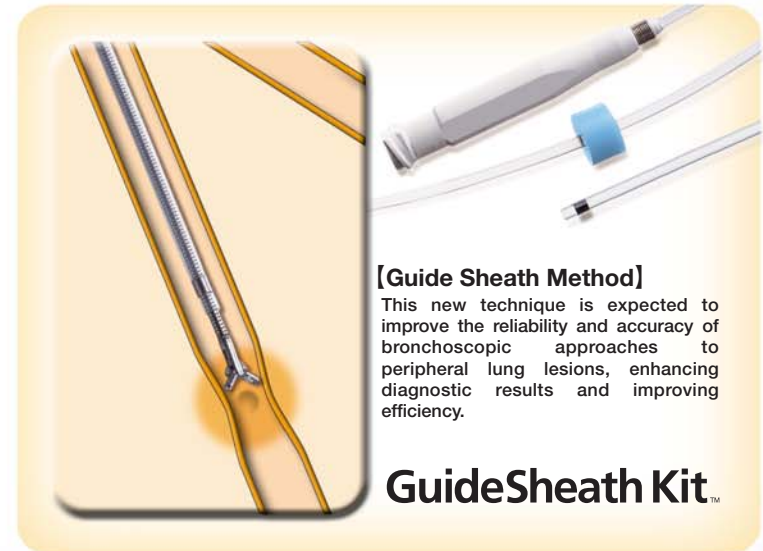
UM-S20-17S

Guide sheath compatible



UM-S20-17S Main Features

- Our thinnest ultrasound probe with an outer diameter of only 1.4 mm can be used with the thinner Guide Sheath through 2.0 mm working channel bronchoscope.
- 20 MHz frequency generates high resolution images to support diagnosis and observation.
- This probe is longer than standard probes (S length) which enhances maneuverability when approaching the target site.



[Guide Sheath Method]
This new technique is expected to improve the reliability and accuracy of bronchoscopic approaches to peripheral lung lesions, enhancing diagnostic results and improving efficiency.

GuideSheath Kit™

UM-BS20-26R

UM-S30-20R/S30-25R

UM-S20-17S/S20-20R

UM-2R/3R

Endoscopic Ultrasonic Probe Specifications

	UM-BS20-26R	UM-S30-20R	UM-S30-25R	UM-S20-17S	UM-S20-20R	UM-2R/3R
Display Mode	B-Mode					
Scanning Method	Mechanical radial scanning					
Scanning Direction	360° circumferential, in perpendicular direction with respect to probe insertion direction					
Ultrasonic Frequency	20 MHz	30 MHz		20 MHz		12 MHz (2R), 20 MHz (3R)
Working Length	2050 mm			2150 mm	2050 mm	
Total Length	2140 mm			2225 mm	2140 mm	
Insertion Tube	2.5 mm	1.7 mm (distal end 850 mm) 2.0 mm (on connector side)	2.4 mm	1.4 mm (distal end 1085 mm) 1.7 mm (on connector side)	1.7 mm (distal end 850 mm) 2.0 mm (on connector side)	2.4 mm
Maximum Diameter	2.6 mm	2.0 mm	2.5 mm	1.8 mm	2.0 mm	2.5 mm
Compatible Scope	with 2.8 mm or larger channel	with 2.2 mm or larger channel	with 2.8 mm or larger channel	with 2.0 mm or larger channel	with 2.2 mm or larger channel	with 2.8 mm or larger channel
Contact Method for ROI	Balloon Contact Method		Direct Contact Method			
Distal-End Illustration						
Guide Sheath Compatibility	×	○	×	○	○	×

Guide Sheath Kit Specifications

Model name	K-201	K-202	K-203	K-204
Compatible channel diameter	2.0 mm		2.6 mm	
Set content	Guide Sheath SG-200C Biopsy Forceps FB-233D Cytology Brush BC-204D-2010	SG-200C FB-233D -	SG-201C FB-231D BC-202D-2010	SG-201C FB-231D -
ET Stopper	3 pcs. (white)		3 pcs. (2 pcs: gray / 1 pc: white)	
US Stopper	1 pc. (white)		1 pc. (gray)	

Guide Sheath Kit (K-201/K-203)



Complete set of guide sheath combinations with biopsy forceps and cytology brush. Available in two types — large diameter (2.6 mm) and small diameter (2.0 mm).

- K-201: 2.0 mm K-203: 2.6 mm
- Guide Sheath (single-use)
 - Biopsy Forceps (single-use)
 - ET Stopper 3 pcs.
 - US Stopper 1 pc.

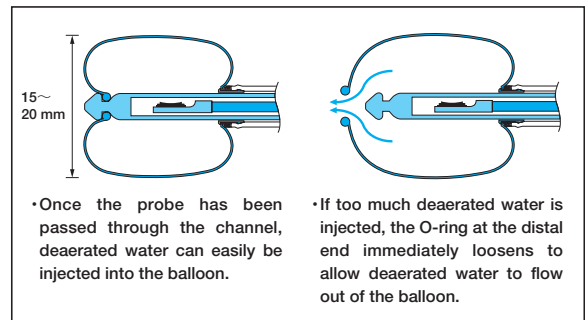
Guide Sheath Kit (K-202/K-204)



Guide sheath and biopsy forceps. Available in two types — large diameter (2.6 mm) and small diameter (2.0 mm).

- K-202: 2.0 mm K-204: 2.6 mm
- Guide Sheath (single-use)
 - Biopsy Forceps (single-use)
 - ET Stopper 3 pcs.
 - US Stopper 1 pc.

Mechanism of the UM-BS20-26R distal end



Specifications, design and accessories are subject to change without any notice or obligation on the part of the manufacturer.