

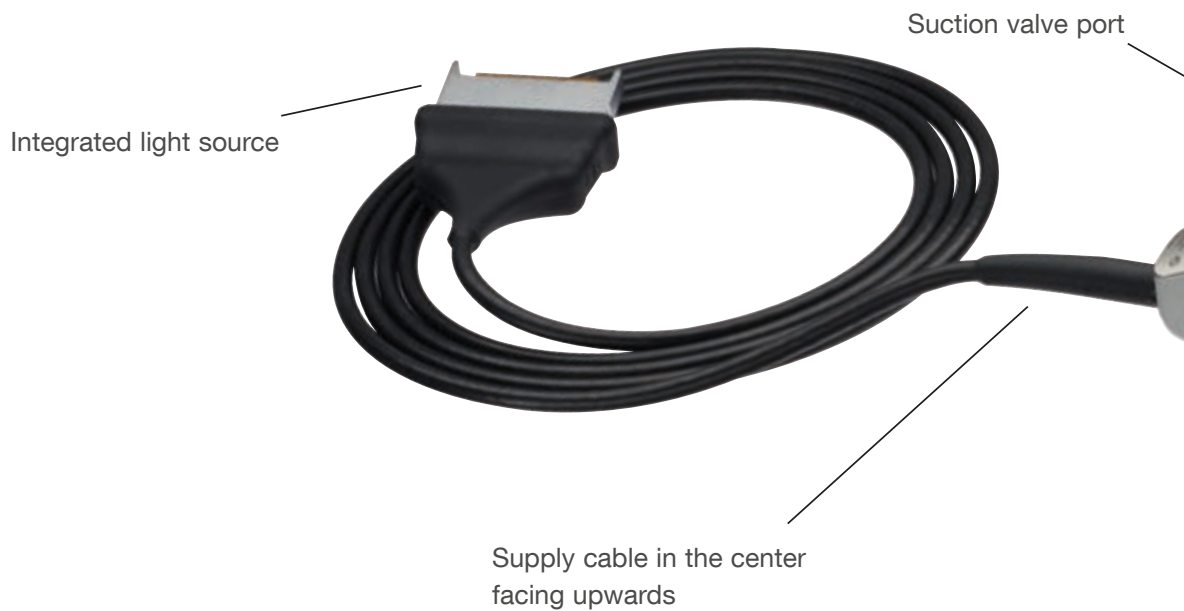
The New Flexible Video Cystoscope **HD-VIEW**
High Performance by Definition



The New Flexible Video Cystoscope HD-VIEW™

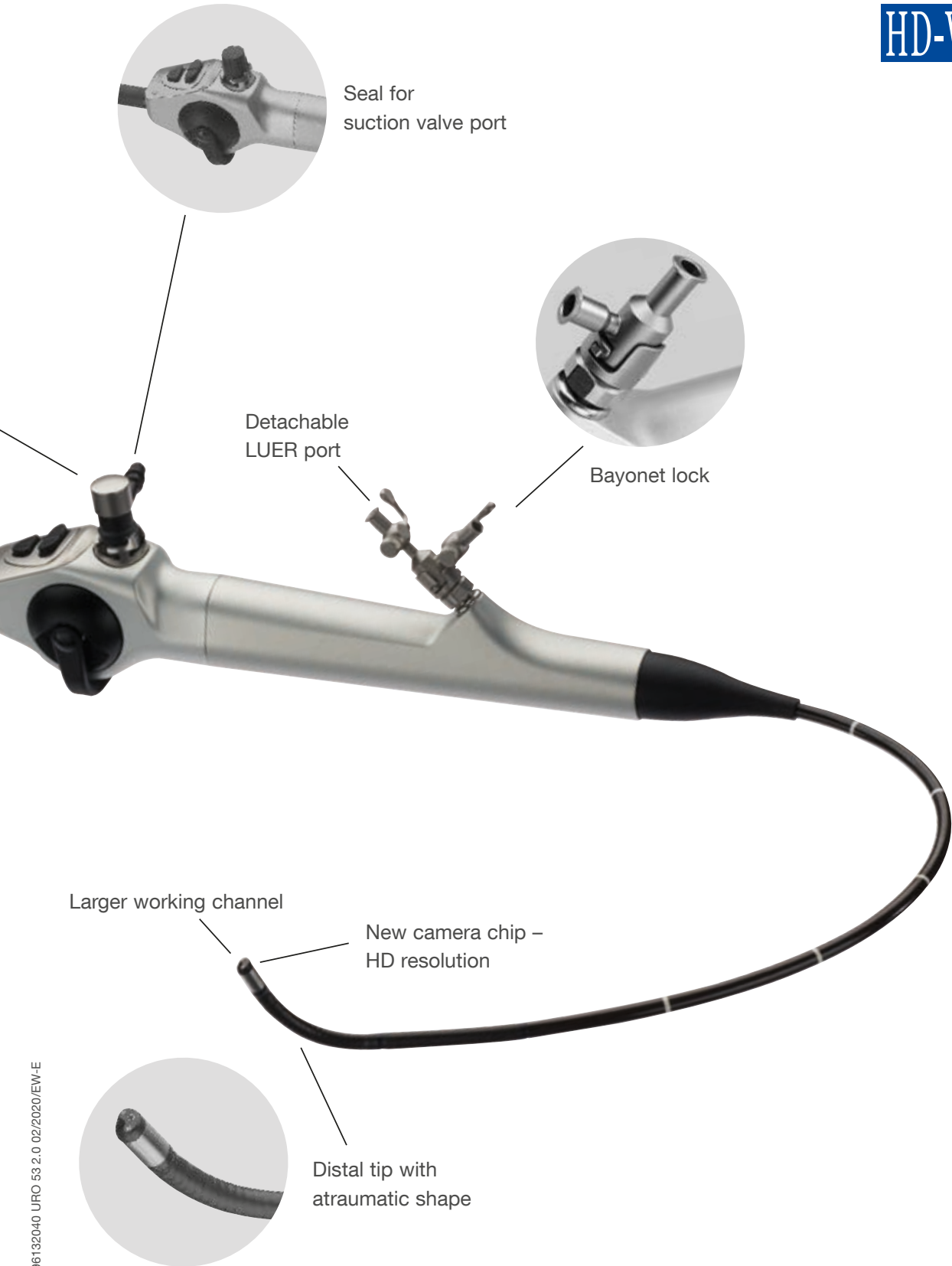
New technologies and extensive market experience combined in one product

The new flexible cystoscope is able to meet increasing demands on image quality in flexible cystoscopy as well as percutaneous applications. In addition, the new suction valve provides an effective method for rapid emptying of the bladder. The distal tip has been redesigned to enable easy insertion.



BRILLIANT.

EASY.



FAST.

BRILLIANT with excellent image quality

New camera chip: Replacing the previous CCD chip technology with the future-oriented CMOS-technology delivers a HD resolution for brilliant imaging. The details and colors of the endoscopic image are clear and lifelike and thus allow – in combination with the KARL STORZ S-Technologies – better diagnosis and treatment of tumors.

- **Noticeably higher resolution thanks to camera chip in high definition**

Integrated light source: An LED has been integrated into the handle. Combining the HD chip quality with LED technology delivers much brighter images than those provided by chip-on-the-tip cystoscopes. Furthermore, an external light source is no longer required. This makes the previous model's bulky plug geometry with extra camera and light cables obsolete.

- **Integrated LED technology with automatic exposure**

EASY thanks to convenient handling

Supply cable: The new HD-VIEW™ requires only one supply cable for the camera control unit. The cable is positioned in the center and exits from the top of the handle so that ergonomic handling for both left- and right-handed users is ensured. Moreover, a special light cable as well as manual white balance is no longer necessary. The cystoscope works on a plug-and-play system that is easy to use and balanced in the hand.

- **Central supply cable**

Distal tip: A new atraumatically shaped tip makes insertion into the urethra easier so that patient comfort is increased.

- **10.9 Fr. tip with atraumatic shape**

Detachable LUER port: Various attachments, with or without stopcocks, are available to the user. Separate steam sterilization of these stainless steel parts is also possible.

- **Detachable LUER port for better reprocessing**

BRILLIANT.

EASY.



FAST thanks to optimized suction and working channel

Suction valve port: The HD-VIEW™ is equipped with a suction valve that allows rapid treatment and emptying of the bladder. The user is able to suction urine and even smaller tissue fragments from the bladder. Depending on user requirements, a sterile single-use suction valve or a reusable valve can be utilized. If suction is not required, a seal is available to close off the channel.

- **Suction valve for rapid bladder evacuation**

Larger working channel: The new HD-VIEW™ features a larger working channel to ensure better irrigation, even when instruments are already inserted.


- **7 Fr. working channel**

FAST.

Flexible Video Cysto-Urethroscope

High Performance by Definition

HD-VIEW

| Item no. | Deflection of distal tip | Direction of view | Working length | Working channel | Sheath size | Distal tip outer circumference | Position of working channel | Working channel port | Suction |
|---|---|-------------------|----------------|-----------------|-------------|--------------------------------|-----------------------------|----------------------|---------|
| 11272VHK with positive deflection |  | 0° | 37 cm | 7 Fr. | 16 Fr. | 10.9 Fr. | 6 o'clock | detachable | yes |
| 11272VHUK with contrapositive deflection | | 0° | 37 cm | 7 Fr. | 16 Fr. | 10.9 Fr. | 6 o'clock | detachable | yes |



Further information and the HD-VIEW™ product video is available at

<https://go.karlstorz.com/96132040-en-1>

To obtain the HD-VIEW™ product video, please scan the QR code with your mobile phone.



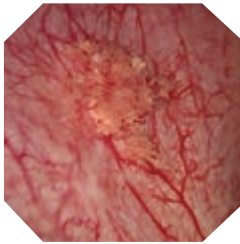
Versatile Visualization Options for Surgery and Diagnostics

IMAGE1 S

The video cysto-urethroscope in combination with the IMAGE1 S™ camera system

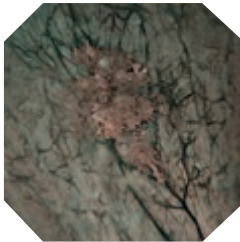
For clear visualization and easier differentiation of tissue structures

- Side-by-side view: Parallel display of the standard image and visualization modes possible
- Brilliant imaging in HD



CLARA and CHROMA

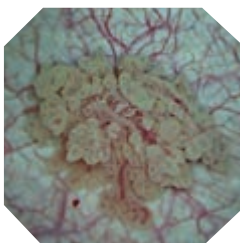
IMAGE1 S™ offers the possibility to combine the CLARA and CHROMA technologies. In this mode, the image is homogeneously illuminated and tissue structures are clearly enhanced by CHROMA.



SPECTRA A*

In SPECTRA A*, reds are removed by spectral filtration. This color change is achieved by shifting color channels. The most delicate red structures, such as blood vessels and the mucosa, are clearly displayed in greenish-blue.

* not for sale in the U.S.



SPECTRA B*

SPECTRA B* reduces the red tones and intensifies the green-blue spectral range. The image background becomes greenish, highlighting blood vessels and capillaries. Nevertheless, the original color impression is largely maintained.

* not for sale in the U.S.

For use with the IMAGE1 S™
Camera Control Unit or TELE PACK+



11272VHK/11272VHUK

IMAGE1 S™ Camera System



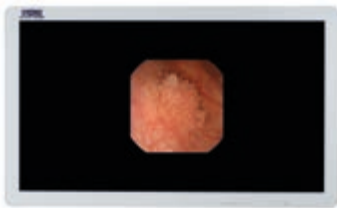
11272VHK/11272VHUK

TELE PACK+



TP101

For use with all visualization modes



Flexible Video Cysto-Urethroscope

High Performance by Definition

HD-VIEW



The new HD-VIEW™ cystoscope is available as 2 different sets:

11272VHK **Flexible Video Cystoscope HD-VIEW™, Set**, with positive deflection mechanism, with suction channel and integrated light source, deflection of distal tip 210°/140°, direction of view 0°, angle of view 100°, working channel inner diameter 7 Fr., sheath size 16 Fr., working length 37 cm, for use with IMAGE1 S™

The following accessories are included in delivery:

| | |
|----------|---|
| 11272VH | Flexible Video Cystoscope HD-VIEW™ |
| 11014L | LUER Port with Stopcocks |
| 11014RA | Cleaning Adaptor , for working channel |
| 11014DS | Seal with Hole , for working channel and connector |
| 11301CD1 | Irrigation Adaptor |
| 27677SX | Case |
| 13242XL | Leakage Tester |
| 11025E | Pressure Compensation Cap |

11272VHUK **Same**, with contrapositive deflection mechanism, with Double LUER Port 11014LU

Optional Accessories:



11301CE1 **Suction Valve**, for single use, package of 20



11301CB1 **Suction Valve**, reusable



11301P **Seal for Suction Valve Port**, to seal the suction channel, for use with flexible Video Cystoscopes HD-VIEW™ 11272VH/11272VHU



11014L **LUER Port with Stopcocks**, attachment to working channel, for the connection of irrigation tubes and the insertion of instruments



11014LU **Double LUER Port**, attachment to working channel, for the connection of irrigation tubes and the insertion of instruments



11014DS **Seal Working Channel Connector**, seal with hole, package of 10, for use with LUER Ports 11014L/11014LU and Cleaning Adaptor 11014RA




27023FE **Grasping Forceps for Small Fragments**, 5 Fr., single action jaws, flexible, length 73 cm



27023ZE **Biopsy Forceps**, 5 Fr., single action jaws, flexible, length 73 cm



27023KF **Stone Basket**, nitinol, without tip, straight, STERILE 
3 Fr., length 70 cm, 4 wires, basket diameter 12 mm,
sterile, for single use



27723T **Coagulation Electrode**, unipolar, 4 Fr., length 73 cm




11301CD1 **Irrigation Adaptor**, for machine cleaning, reusable,
for use with flexible Video Cystoscopes HD-VIEW™
11272VH/11272VHU



11014RA **Cleaning Adaptor for Working Channel**,
for connection during machine as well as manual cleaning
and disinfection, for use with flexible Video Cystoscopes
HD-VIEW™ 11272VH/11272VHU



110916-50 **Cleaning Brush**, with double-sided brush,
length 100 cm, brush diameter 3 mm, unsterile,
for single use, package of 50, for use with flexible
endoscopes with working channels ranging from
diameter 2-2.3 mm 



39406AS **Plastic Container for Flexible Endoscopes**, suitable
for gas and hydrogen peroxide (Sterrad®) sterilization
and storage, external dimensions (w x d x h):
550 x 260 x 90 mm, for use with one flexible endoscope



11014Y **Fiber Fixation**, instrument port for the insertion and
fixation of laser fibers, stone baskets, wires etc.
in flexible endoscopes

It is recommended to check the suitability of the product for the intended procedure prior to use.
Please note that the described products in this medium may not be available yet in all countries due to different regulatory requirements.

More than
75
Years

*Shaping the Future
of Endoscopy with you*

STORZ
KARL STORZ—ENDOSKOPE

THE DIAMOND STANDARD

KARL STORZ SE & Co. KG
Dr.-Karl-Storz-Straße 34, 78532 Tuttlingen/Germany
Postbox 230, 78503 Tuttlingen/Germany
Phone: +49 7461 708-0
Fax: +49 7461 708-105
E-Mail: info@karlstorz.com

www.karlstorz.com

