

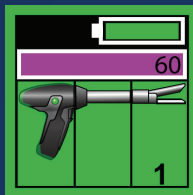
# MORE INFORMATION. LESS GUESSING.

The Signia™ stapler provides real-time feedback when used with all Tri-Staple™ reloads. That means you get valuable information to help you make informed decisions<sup>1,†</sup> — and much more.

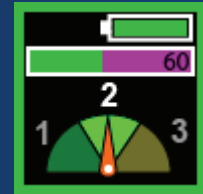
Here are just a few examples of what real-time feedback can bring to your procedures.



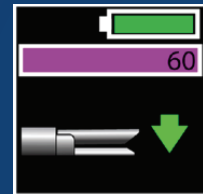
Visual cues that show forces on tissue during clamp and correlate to the tactile feedback of a manual stapler.<sup>1,†,‡</sup> This can help you **assess load selection**.<sup>1,†,‡</sup>



Battery and system status, **fire-ready indicators**, and more



A gauge that measures forces during firing<sup>2-4</sup> — and tells you when it's slowing down to **optimize staple formation** in challenging applications.<sup>2,3,5</sup>



A built-in user's guide for **simplified setup**<sup>5</sup>

**Medtronic**  
Further, Together

# SEE THE FEEDBACK. GET MORE CONSISTENT STAPLE LINES.<sup>2-4,§,††</sup>

The Signia™ stapler uses tissue sensing<sup>2-4,§</sup> to provide real-time feedback upon clamping and firing through tissue.<sup>6</sup>

The Signia™ stapler adjusts firing speeds across tissue types to optimize staple formation in variable tissue.<sup>2,3,§</sup> And it tells you when it does.<sup>6</sup>

Manual staplers don't do that. Neither do fixed-speed powered staplers. It's what makes the Signia™ stapler smart.

**Learn more about the benefits of  
real-time feedback and the Signia™ stapler.  
Contact your sales rep.**

**Please see the package insert for the complete list of indications, warnings, precautions, and other important medical information.**

†Bench test results may not necessarily be indicative of clinical performance. †P < 0.001.

§Preclinical results may not correlate with clinical performance in humans. Ω9 out of 10 surgeons surveyed after use agreed. ††Compared to manual and fixed speed powered staplers.

**1.** Based on internal test report #RE00055515, Surgeon evaluation testing Signia™ stapling system sensing technology and real-time feedback. Aug. 4, 2016. **2.** Based on internal test report #R2146-173-0, ASA verification testing with slow speed force limit evaluation. 2015. **3.** Based on internal test report #R2146-151-0, Powered stapling firing speed DOE analysis and ASA parameters. 2015. **4.** Based on internal report #RE00218740, Signia™ stapling adaptive firing technology data calculations and references. Aug. 7, 2019. **5.** Based on internal test report #RE00024826, Signia™ stapling system summative usability report, rev A. January 2016. **6.** Signia™ stapler [user manual]. Mansfield, MA: Medtronic; 2016.

© 2020 Medtronic. All rights reserved. Medtronic, Medtronic logo and Further. Together are trademarks of Medtronic.™\* Third party brands are trademarks of their respective owners. All other brands are trademarks of a Medtronic company. 11/2020 – US-ST-2000124 – [WF#3859445]

[medtronic.com/covidien](https://www.medtronic.com/covidien)



**Medtronic**