

**OLYMPUS**<sup>®</sup>

Your Vision, Our Future

**EVIS LUCERA  
ELITE**

EVIS LUCERA ELITE BRONCHOVIDEOSCOPE

**BF-H290**

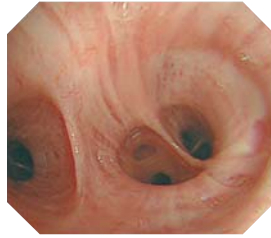
Diagnostic bronchoscope with superb HDTV image quality and a 2.0 mm instrument channel



## Main Features

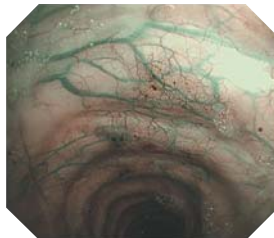
### HDTV

Extremely clear HDTV images enable more detailed observation of bronchial surfaces.



### NBI (Narrow Band Imaging)

NBI is an optical image enhancement technology that improves the visualisation of vessels on the mucosal surface. NBI is now twice as bright as the CV-260, CLV-260SL and BF-6C260.



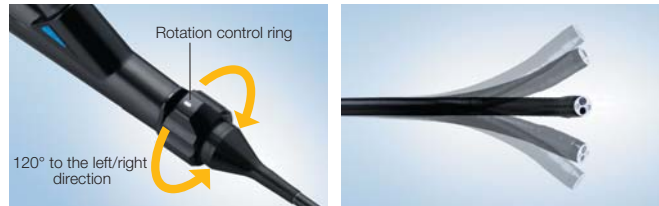
### Electronic magnification

Electronic magnification of 1.4x, 1.6x, 1.8x is now possible, allowing closer observation.



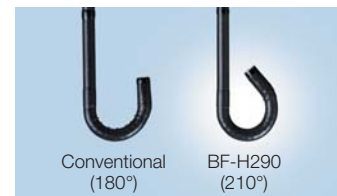
### Insertion tube rotation function

The insertion tube can be rotated left or right up to 120 degrees by simply turning a ring on the control section of the scope. This supports easier operation and smoother insertion with less operator fatigue.



### Wider angulation range

A 210° up angulation range supports smoother insertion to the upper lobe bronchi and allows more of a bend in the scope when an EndoTherapy device is inserted in the endoscope's working channel.



### Waterproof one-touch connector

A new connector design minimises the effort required for setup prior to and in between cases. In addition, it is fully submersible and eliminates the need for a water-resistant cap and the associated risk of an expensive repair due to accidental immersion.



## Specifications

Optical System	Field of view	120°
	Direction of view	Forward viewing
	Depth of field	3-100 mm
	Image quality	HDTV
Insertion Tube	Distal end outer diameter	6.0 mm
	Distal end enlarged	
	Insertion tube outer diameter	5.7 mm
	Working length	600 mm
	Insertion tube rotation function	Yes

Instrument Channel	Channel inner diameter	2.0 mm
	Minimum visible length	3.0 mm from the distal end
Bending Section	Direction from which EndoTherapy accessories enter and exit the endoscopic image	
	Angulation range	
Electro-Cautery Instrument Compatibility	Yes	
Laser Compatibility	Nd: YAG, 810nm diode	
Compatible EVIS LUCERA System	Video System Center OLYMPUS CV-290 Xenon Light Source OLYMPUS CLV-290SL, CLV-290	

Specifications, design and accessories are subject to change without any notice or obligation on the part of the manufacturer.